



api-usa.com

# Process Signal Problem Solvers

**Convert Rescale Isolate**  
**Split Transmit Alarm**

**NEW!**



### PLC 4-20 mA Input Isolation

- ❑ Eliminate PLC input ground loops
- ❑ Wire for sinking or sourcing I/O

### DuoPak® 2 Channel Isolator/Converter

- ❑ Two independent conditioners in one—saves space and cost
- ❑ Choose DC, AC, frequency, strain, RTD, or potentiometer inputs

### IsoSplitter® Isolated Signal Splitters

- ❑ One input isolated, split, and rescaled to two outputs
- ❑ Drop-in solution when data acquisition is added to your system



### Api Exclusive Features

#### ■ Input & Output LoopTracker® LEDs

- ✓ Variable intensity LEDs for input and output
- ✓ Continuously monitor loop status and diagnose connection problems

#### ■ Output Test Push Button

- ✓ Test system output independent of the process input

#### ■ The Analog Advantage

- ✓ Fast, continuous response—no lag time or stair-stepping
- ✓ No processor lock-up/shut-down in noisy environments
- ✓ Hot swappable



### Api Has You Covered

- Free Application Support
- Fast Delivery
- DC, AC, Frequency, Strain Gauge, Valve Position, Math, Temperature, Potentiometer

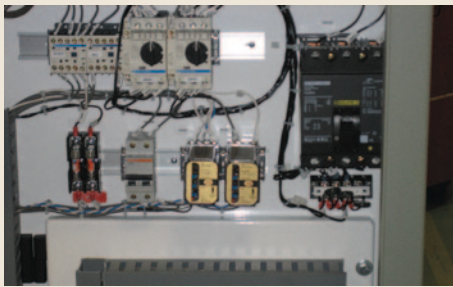
## Cecomp Intrinsically Safe Digital Pressure & Vacuum Gauges

- ❑ Class I, Division 1, Groups A, B, C, D
- ❑ All Metal Housing
- ❑ Min/Max & Memory Options
- ❑ ±0.25% Accuracy
- ❑ 316 Stainless Steel Wetted Parts
- ❑ Most Engineering Units
- ❑ Vacuum to 5000 PSI
- ❑ Compound, Bipolar, Absolute Ranges

- Portable & Rugged Test Gauge
- NEC Hazardous Areas
- Oil, Gas, Petrochemical
- Gas Pipeline Pressures
- Aircraft Service

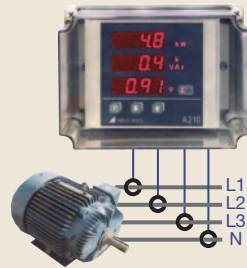


**Cecomp Electronics**  
Div. of Absolute Process Instruments, Inc.  
cecomp.com



## Camille Bauer *UL-Approved* Electrical Power Monitors

- ❑ Monitor and Analyze Power Consumption
- ❑ UL-Approved A210, A220, A230s, A230 Series
- ❑ Current Transformer & Voltage Inputs
- ❑ Active & Reactive Power, Phase Angle, Frequency
- ❑ Harmonics and THD Analysis
- ❑ Analog, Pulse and Alarm Outputs
- ❑ Ethernet, Profibus, LON, Memory Options



## Cecomp Digital Pressure & Vacuum Gauges

- ❑ Battery Powered Portable Test Gauges
- ❑ Low Voltage Powered Models
- ❑ 2- and 4-Wire Transmitters
- ❑ Alarms and Alarms with Retransmission
- ❑ ±0.25% Accuracy, Vacuum to 5000 psi
- ❑ OEM and Custom Models

[cecomp.com](http://cecomp.com)



## Absolute Process Instruments Inc.

1220 American Way  
Libertyville, IL 60048  
[www.api-usa.com](http://www.api-usa.com)

